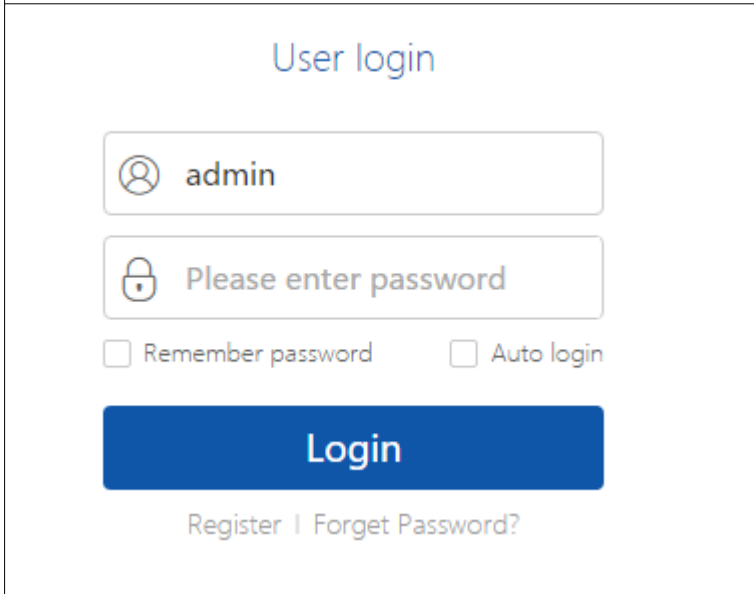


Install the CMS software (EseeCloud) from CD or download from the product page. After installing, you should be able to launch the program.

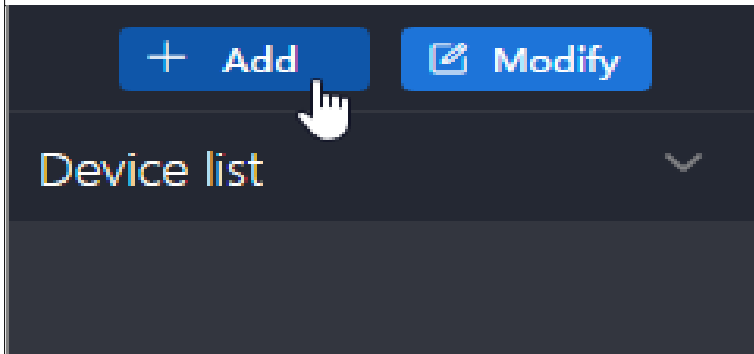
If you don't see a shortcut, then go into the program folder (for example C:\Program Files (x86)\EseeCloud), right click on EseeCloud.exe and make a shortcut or select "Pin"



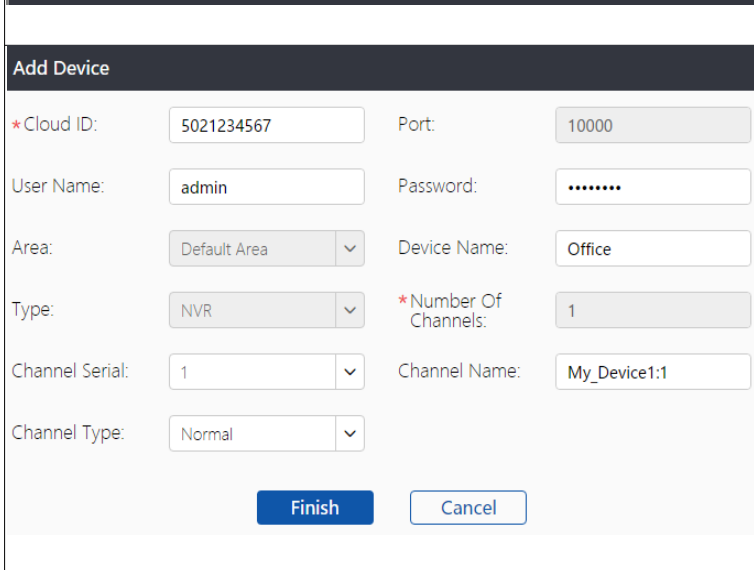
The EseeCloud app will ask you for a login. This login is for the cloud account, not the NVR.

You can click "Register" and complete the registration process.

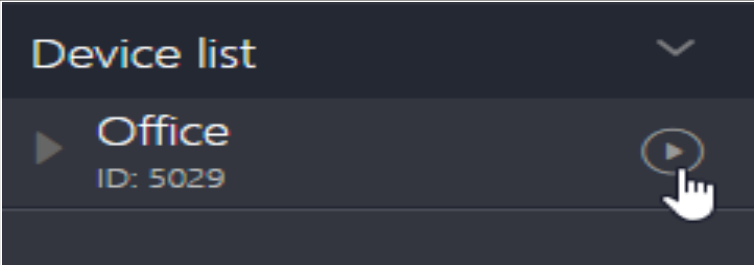
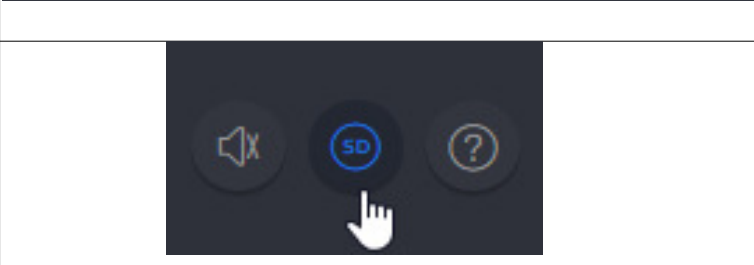
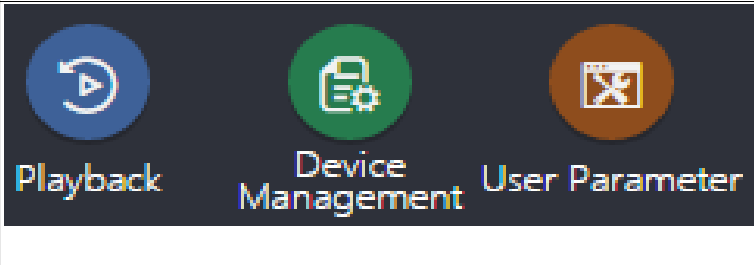
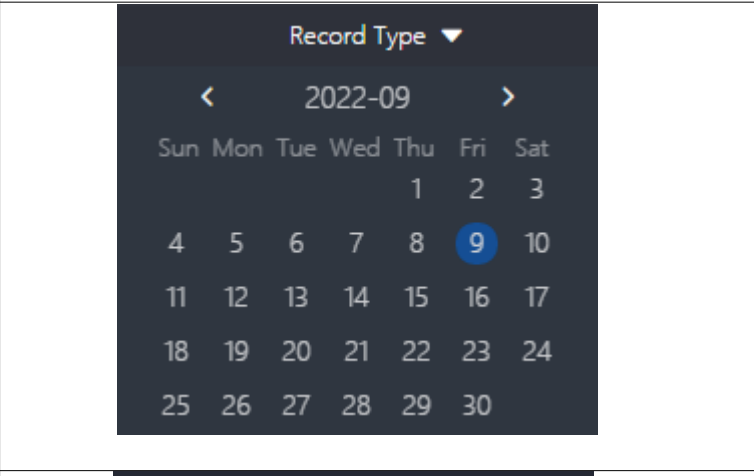
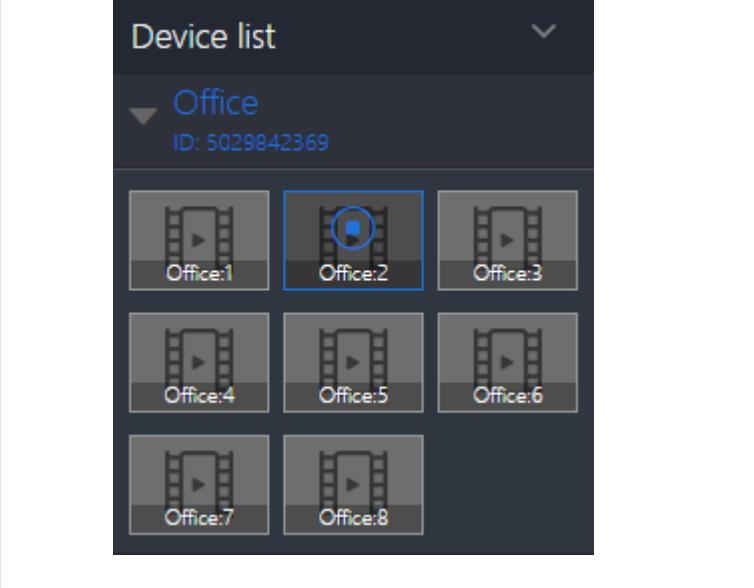
Log in with the cloud account.

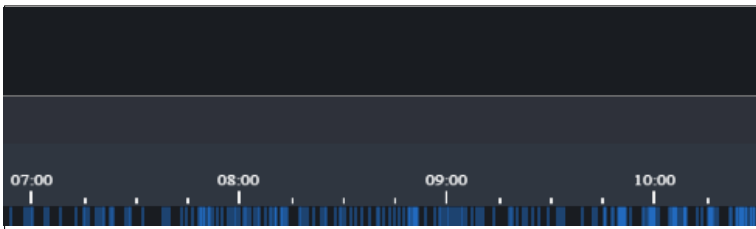


If there are no devices listed, click "Add"

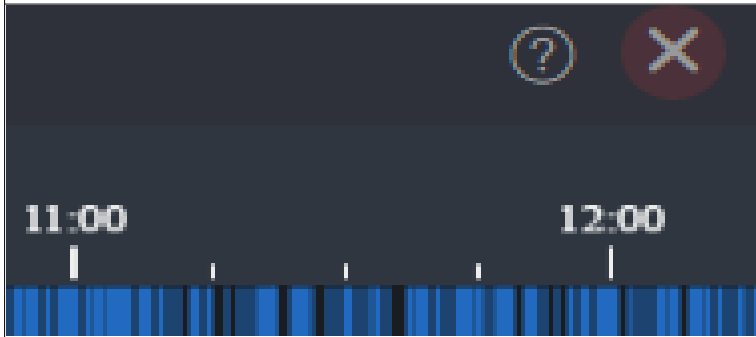


We will add the device by cloud. You can get the cloud ID number from the sticker on the device, or the NVR itself under its "System Setup → Account" menu. Enter the Cloud ID. Enter the login for the NVR (the NVR not the app). You can give a device name. Here, we label it "Office". Click "Finish"

	<p>The device should now be in the device list.</p> <p>To play live video, click on the play icon. You can also play individual channels by expanding the device and clicking on a channel.</p>
	<p>You can select standard definition or high definition live view. For high definition video or multiple live channels, a gigabit router and high speed upload bandwidth for the NVR is recommended.</p>
	<p>To play back recorded video, click the playback button and close the live video.</p>
	<p>Select a date on the calendar.</p>
	<p>Expand the device list. Expand the device. Select a channel to search. Click "Retrieval"</p>



If there is video for the channel on that day, the timeline will show segments. Navigate the timeline to view video.



You can exit by clicking on the "x"