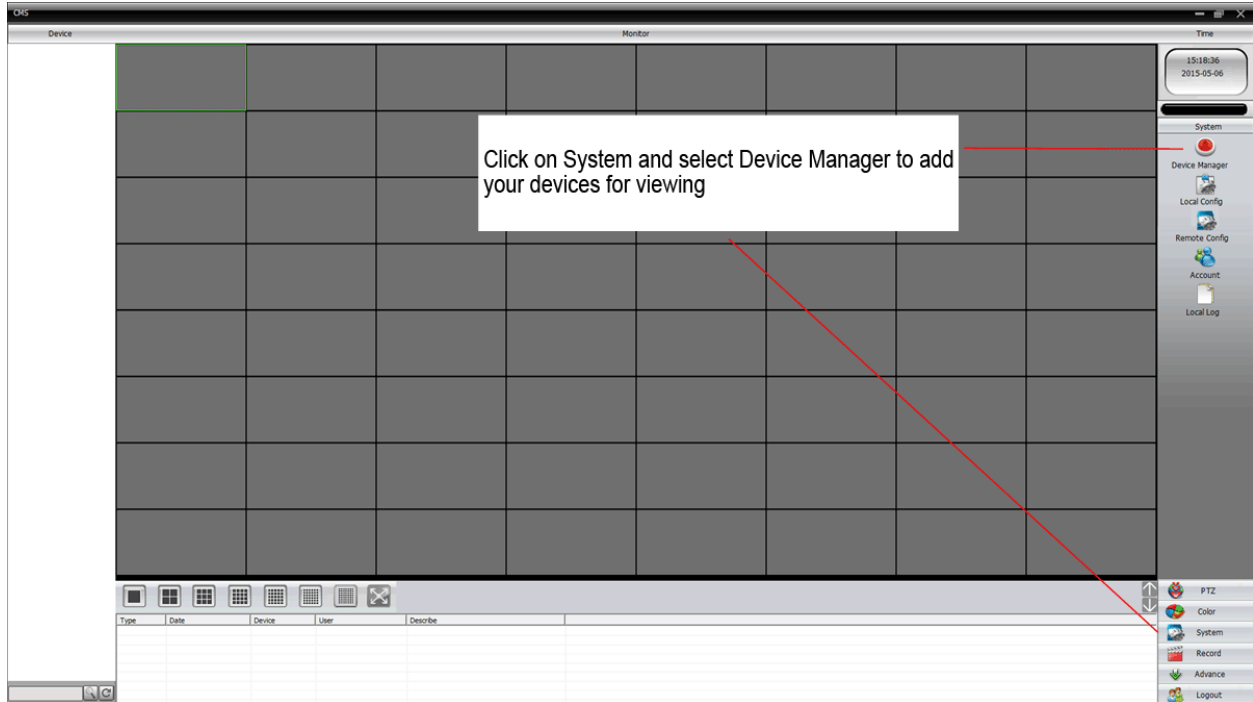
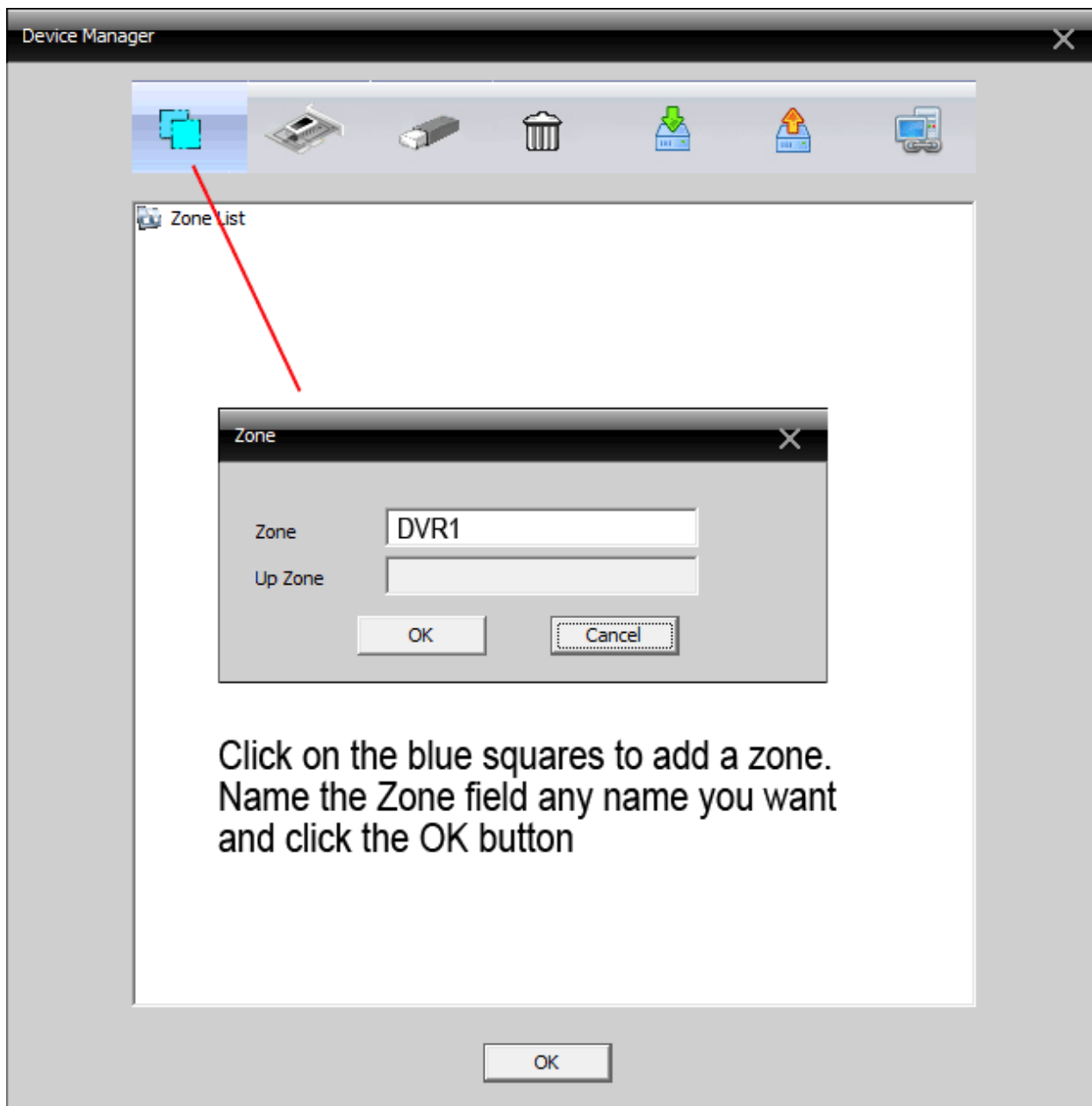
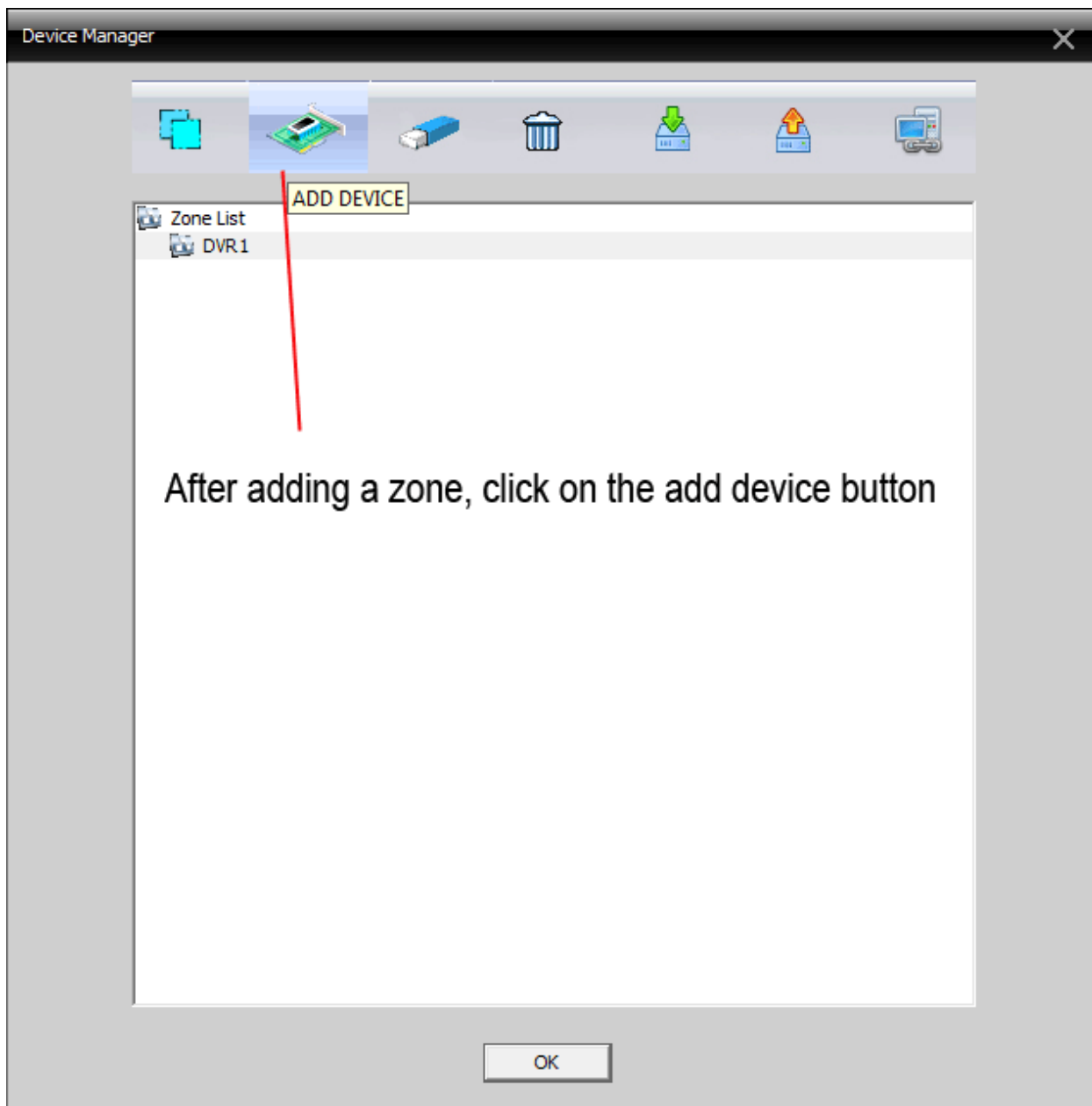


## Using the CMS Software from a PC

If you're using a PC and prefer using a CMS application, you can use the CMS application provided on the CD or download it from our website. Please make sure to port forward the relevant ports (media port and http port) for proper viewing (See **Network Setup Guide**).







Edit ✕

| NO.  | IP Address | Port | MAC |
|--|------------|------|-----|
| Add device by IP address, domain name,<br>ARSP, or Cloud |            |      |     |

Device Name

LoginType  IP Address  Domain  ARSP  Cloud

Domain

Port

User Name  Password

Zone

Vendor

Device Monitor

Time: 15:40:36 2015-05-06

Device List:

- DVR1
- DVR2
  - CAM01
  - D03
  - D04

PTZ Controls:

- Zoom
- Focus
- IRIS
- Pan
- Preset: 01
- PTZ
- Color
- System
- Record
- Advance
- Logout

Log Table:

| Type  | Date                | Device | User  | Describe           |
|-------|---------------------|--------|-------|--------------------|
| Video | 2015-05-06 15:40:32 | DVR1   | admin | Connect successful |
| Video | 2015-05-06 15:40:33 | DVR1   | admin | Connect successful |

Double click on the camera in the list to view. Double click while in live view will disconnect