

PI-YU-525-CNT2 : 5 1/4" Center-Channel In-Wall Speaker

PI-YU-525-CNT1 : 5 1/4" Center-Channel Micro-Flanged In-Wall Speaker

OWNER'S MANUAL - Please read before using this equipment.

! IMPORTANT !

If an icon appears at the end of a paragraph, go to the box on that page with the corresponding icon for pertinent information.

- ⚠ - Warning
- ! - Important
- ⚡ - Caution
- 💡 - Hint
- 📝 - Note

📝 NOTE 📝

Do not paint the speaker element. We recommend you spray-paint the grille so paint does not block the holes.

⚡ CAUTION ⚡

Be sure not to cut into any existing wiring or plumbing hidden behind the wall.

📝 NOTE 📝

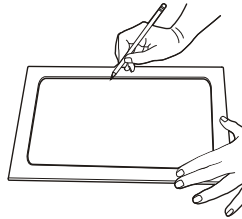
Avoid routing the speaker wire near electrical wires.
Do not nail or staple the speaker wire.

INSTALLATION

PREPARING THE LOCATION

To mount your speaker, you need the following items

- drywall or keyhole saw
 - wire stripper
 - Phillips screwdriver
 - pencil or marker
 - 18-20 gauge speaker wire
1. Be sure the mounting surface is Between 3/8" (9.5mm) and 1 1/4" (31mm) Thick, with at least a 2 3/4" (69mm) clearance behind the Mounting surface and no wall studs or other objects to block the back of the speaker.
 2. Remove the inner cardboard disc from the supplied template/paint mask and keep it for later. Use the outer portion as a template to mark the cutout hole size and location for mounting the speaker.

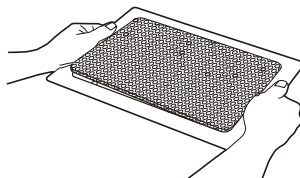


3. Use a drywall or keyhole saw to cut the hole. ⚡

PREPARING THE SPEAKER

If you choose to paint the frame and grille, paint them and let them dry before you connect the speaker wire or mount the speaker.

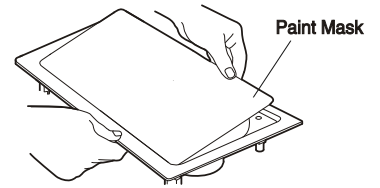
To remove the grille for painting, insert a paper clip into one of the grille openings then pull up. Or, you can carefully twist the plastic frame back and forth until the grille edge becomes exposed, then lift the grille to remove it, or use the grill remover to remove the grille.



Carefully remove the dust cloth from behind the grill and replace it after you are finished painting.

You can also paint the frame to match your wall or ceiling. To prevent paint from entering the speaker, remove the grill and insert the supplied cardboard paint mask. After the paint is dry, remove the

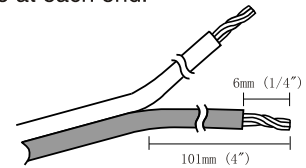
paint mask and replace the grill.



CONNECTING THE SPEAKER WIRES

Your local electronics store sells a wide selection of speaker wire. We recommend you use wire that is color-coded or marked on one side to help you connect the wire correctly

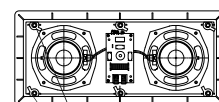
1. Route the speaker wire to the speaker from the receiver. 📝
2. Separate about 4" (101mm) of Speaker wire at each end.



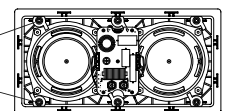
3. Using a wire stripper, remove about 1/4" (6mm) of insulation from each wire. Then twist the ends of each wire.
4. Connect the marked wire to a red Speaker terminal by pressing the release tab, inserting the wire into the hole, and then releasing the Tab. Repeat this procedure to connect the unmarked wire to the black terminal.
5. Connect the marked wire coming from the speaker to the left channel of the receiver's positive (+) terminal. Then connect the unmarked wire to the left Channel of the amplifier's negative (-) terminal.

MOUNTING THE SPEAKER

1. Remove the grill to expose the mounting screws.
2. Be sure the mounting tabs are turned in, allowing the speaker to fit into the hole. Then insert the speaker into the mounting hole.
3. Use the four screws to tighten the mounting tabs to the wall or ceiling. Be careful not to over tighten the screws.
4. Replace the grille.



Mounting Tabs



To remove the speaker from the wall or ceiling, loosen the screws only far enough to remove the speaker. This will prevent loss of the mounting tabs.